

Traffic Procedures

Please familiarize yourself with the following traffic maps below:

- Morning Traffic
- Afternoon/Severe Weather Traffic
- Kinder Mid-Day Pick-Up/Drop-Off
- After-School Program Pick-Up
- Morning Severe Weather Traffic

AM Kindergarten:

-Drop-Off

- *Mon-Thurs: Red or Blue Zone (depending on where you live).
- *Every other Fri: Red or Blue Zone (depending on where you live).

-Pick-Up

- *Mon-Thurs: Front of the school.
- *Every other Fri: Red or Blue Zone (depending on where you live).

PM Kindergarten:

-Drop-Off

- *Mon-Thurs: Front of the school.
- *Every other Fri: Red or Blue Zone (depending on where you live).

-Pick-Up

- *Mon-Thurs: Red or Blue Zone (depending on where you live).
- *Every other Fri: Red or Blue Zone (depending on where you live).

Morning General Traffic Tips For Safety & Efficiency (NO CELL PHONES during traffic):

- Always pull to the end of the drop zone BEFORE unloading your student.
- Have students prepared to unload prior to entering the parking lot.
- Outside school doors will be secured/locked at 8:25.
- U-Turns are not allowed on Center Street.
- Bike racks are found by the West Theater Entrance.

Afternoon General Pick-Up Procedures (NO CELL PHONES during traffic):

- Please arrive after 3:00pm.
- Always pull completely forward BEFORE stopping to pick up your student.
- Please stay in your car - faculty members will bring students to you.
- A name tag in the front window will help faculty members find the right students faster.
- Around 3:15 all students that have not been picked up will be brought to the front.
- Walkers must exit out the back doors and head along the far east driveway to the front.
- Please remind your student which Zone they are in.

Severe Weather Procedures:

-Morning Severe Weather Traffic

- *Red and Blue Zone cars will enter in the same manner as a normal morning traffic day. However, all students will be dropped off in the Red Zone and leave out the Blue Zone.

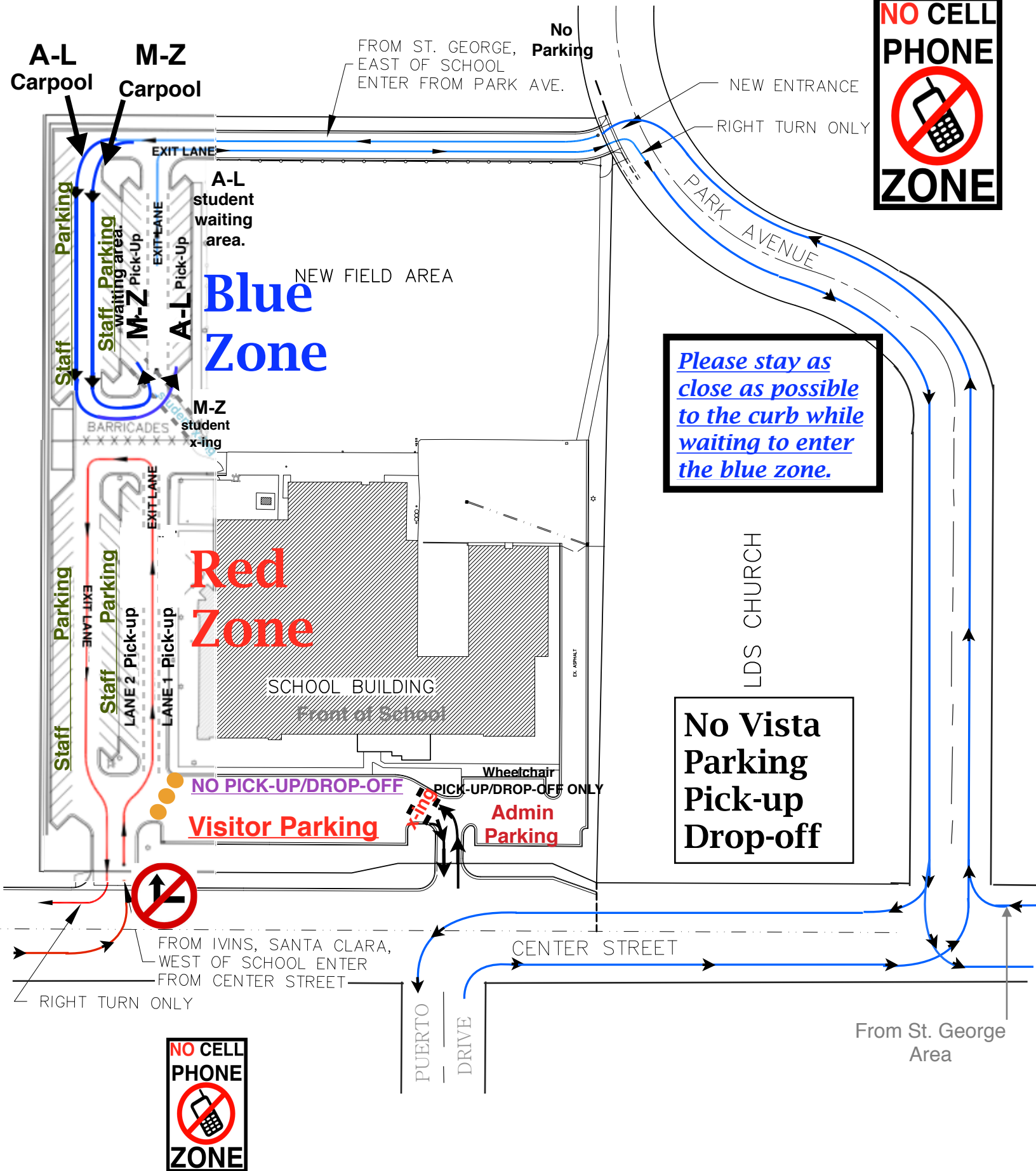
-Afternoon Severe Weather Traffic

- *Same as a normal afternoon traffic day. However, students will be stay in doors until lightning has passed.

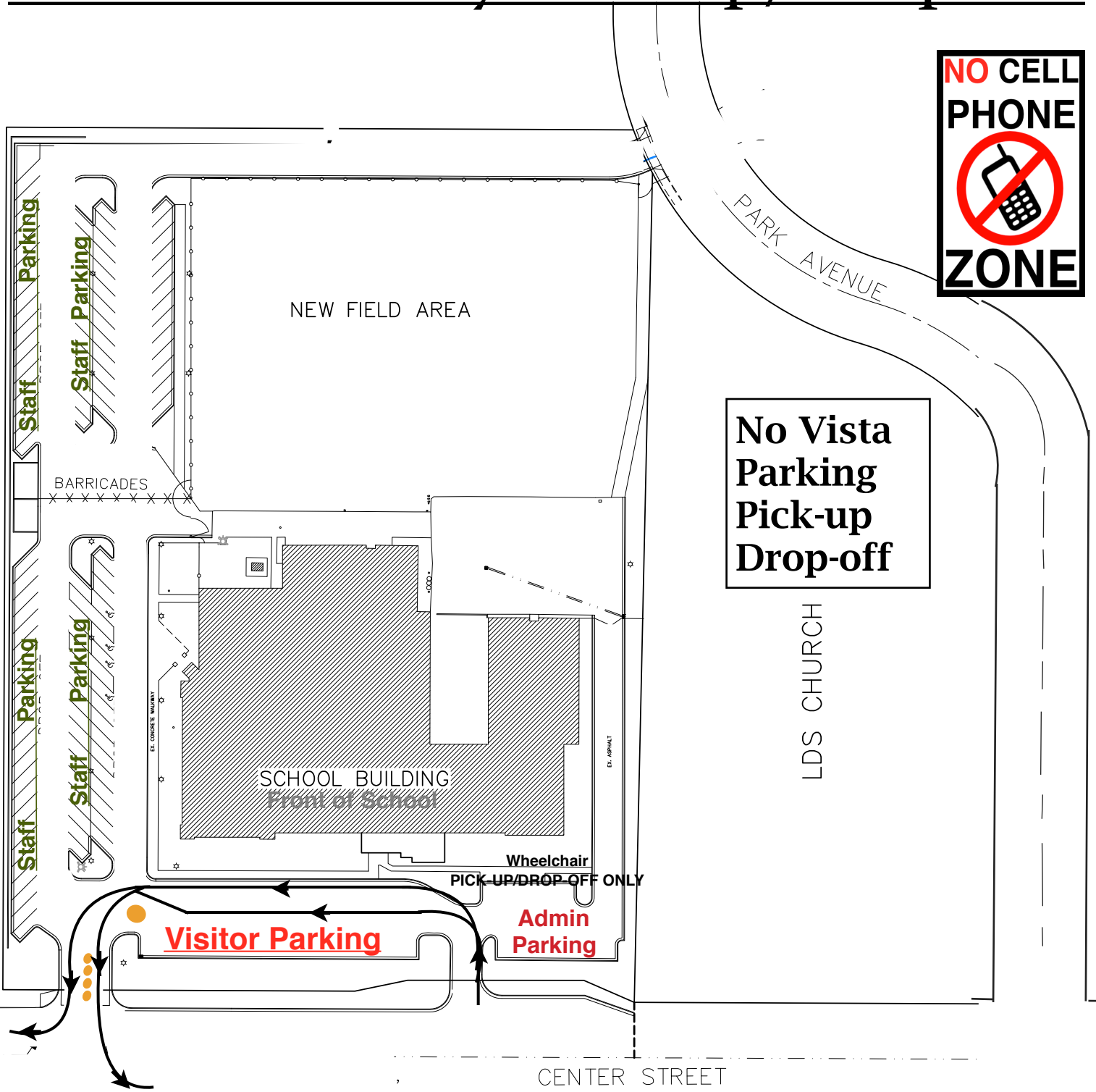
Definition of Severe Weather

- Lightning
- Sleet
- Heavy Rain
- Heavy Snow
- Heavy Winds

Afternoon/Severe Weather Traffic



Kindergarten Mid-Day Pick-Up/Drop-Off



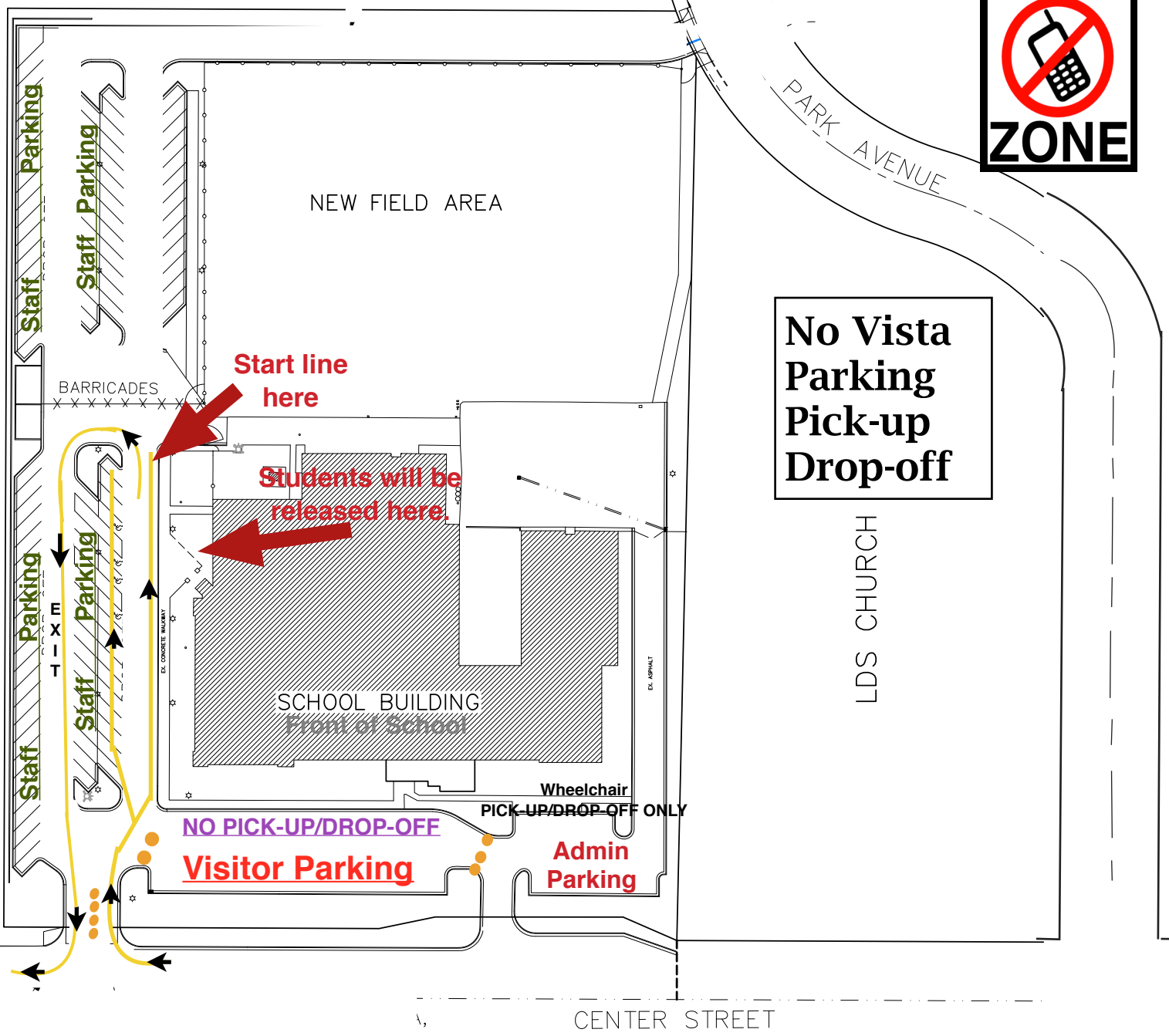
**No Vista
Parking
Pick-up
Drop-off**



PUERTO
DRIVE

After-School Program

Pick-Up



PUERTO
DRIVE

Morning Severe Weather Traffic

